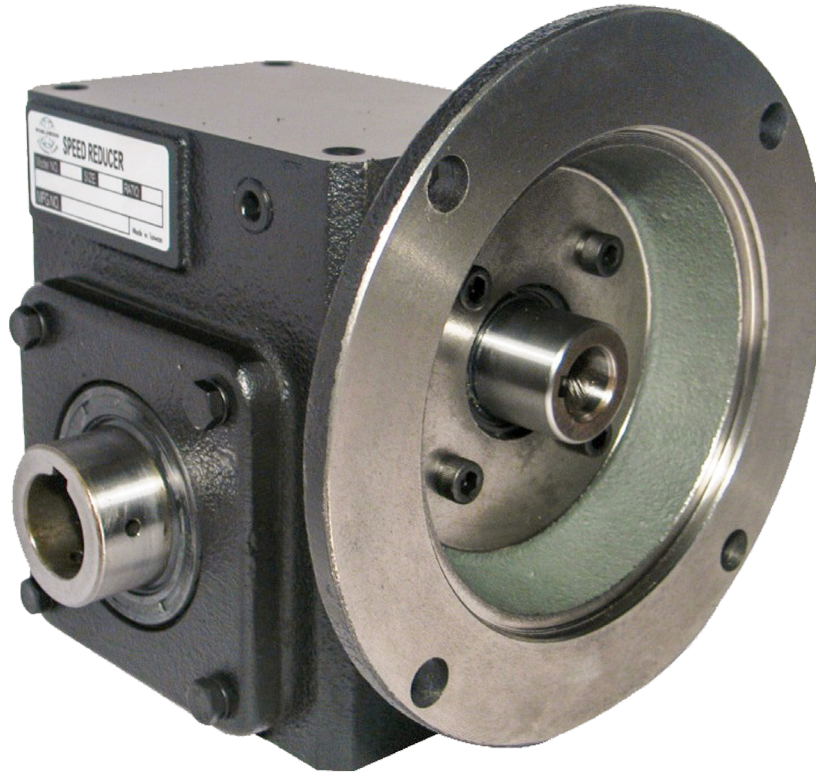




WorldWide
ELECTRIC CORPORATION

(800) 808-2131
WORLDWIDEELECTRIC.COM

**GEAR
REDUCERS**



Heavy Duty Cast Iron Worm Gear Reducers

A High Quality Right Angle Drop-In Replacement

WorldWide Electric's Heavy Duty Cast Iron Right Angle Worm Gear Reducers (HdR) feature solid, one-piece cast iron construction, durable carbon steel shafts, and the flexibility of multiple configurations. Featuring universal interchangeability with the Boston 700 series and other equivalent brands, WorldWide Electric's HdR is an excellent choice for replacing existing units and completely new installations alike.

Specifications

- Speed Ratio: 5:1 - 60:1
- Center Distance: 1.33 - 3.25 inches
- Housing: One-Piece #FC20 Cast Iron
- Input Compatibility: 56C, 145TC, 182/4TC
- Universally Interchangeable

In-Stock and Ready to Ship

We aim to make our customers more competitive by stocking the products they need and responding to their requirements with a shared sense of urgency. With \$50 million of ready-to-ship inventory at seven regional US warehouses, we're ready to assist you!

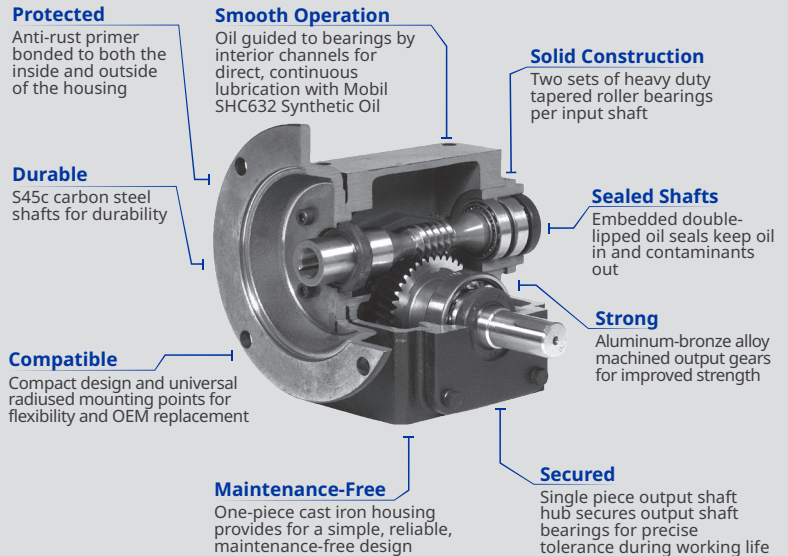
For more details, visit wwec.co/HDRG



Product Features

- Flange and Shaft Input Options
- Shaft and Hollow Bore Output Options
- Embedded Double-Lip Oil Seals
- Double Bearings On Input Shaft
- S45C Carbon Steel Shafts
- Brass Spring Loaded Breather Plug
- Pre-Filled with Mobil Synthetic SHC632
- One-Year Warranty
- Universally Interchangeable with Boston 700 Series and Other Major Brands

For more details, including full specifications and compliance, visit wwec.co/HDRG



Available Models

Not all combinations indicated by this table are possible. Please contact a representative or visit worldwideelectric.com for more information on available models.

Product Family	Box Size	Ratio	Output Type	Motor Frame
HDRF	133	5:1	L: Left Hand	56C
HDRS	154	10:1	R: Right Hand	145TC
	175	15:1	DE: Double End	182/4TC
	206	20:1	H: Hollow Bore	
	237	30:1		
	262	40:1		
	325	50:1		
		60:1		

Model Number Selection

Each model number contains the product family, input type, box size, ratio, and output type.

Flange Input Sample Model Number: HDRF133-10/1-L-56C

HDR	F	133	-	10/1	-	L	-	56C
Product Family	Input Type	Box Size		Ratio *		Output Type		Frame

HDRF133-10/1-L-56C is a flange input, size 133, 10:1 ratio, left hand output Cast Iron Worm Gear Reducer

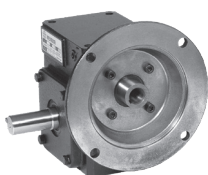
Shaft Input Sample Model Number: HDRS133-10/1-L

HDR	S	133	-	10/1	-	L
Product Family	Input Type	Box Size		Ratio *		Output Type

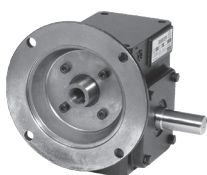
HDRS133-10/1-L is a shaft input, size 133, 10:1 ratio, left hand output Cast Iron Worm Gear Reducer

* When selecting a ratio, replace colon with slash - 10:1 becomes 10/1

Multiple Configurations



Flange Input
Shaft Output
Left Hand Output



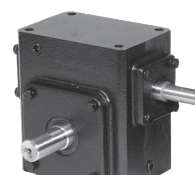
Flange Input
Shaft Output
Right Hand Output



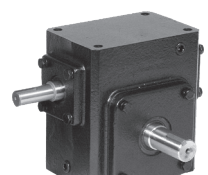
Flange Input
Shaft Output
Double End Output



Flange Input
Hollow Bore Output



Shaft Input
Shaft Output
Left Hand Output



Shaft Input
Shaft Output
Right Hand Output



WorldWide Electric Corporation is a leading manufacturer of electric motors, motor controls, gear reducers, and generators as well as the exclusive master distributor of Hyundai Electric's low-voltage motors and drives. Offering fast, often same-day, shipping from seven regional US warehouses, WorldWide Electric takes pride in providing a competitive edge to our customers by responding to their requirements with urgency, technical expertise, and professionalism.

GRCWR092022